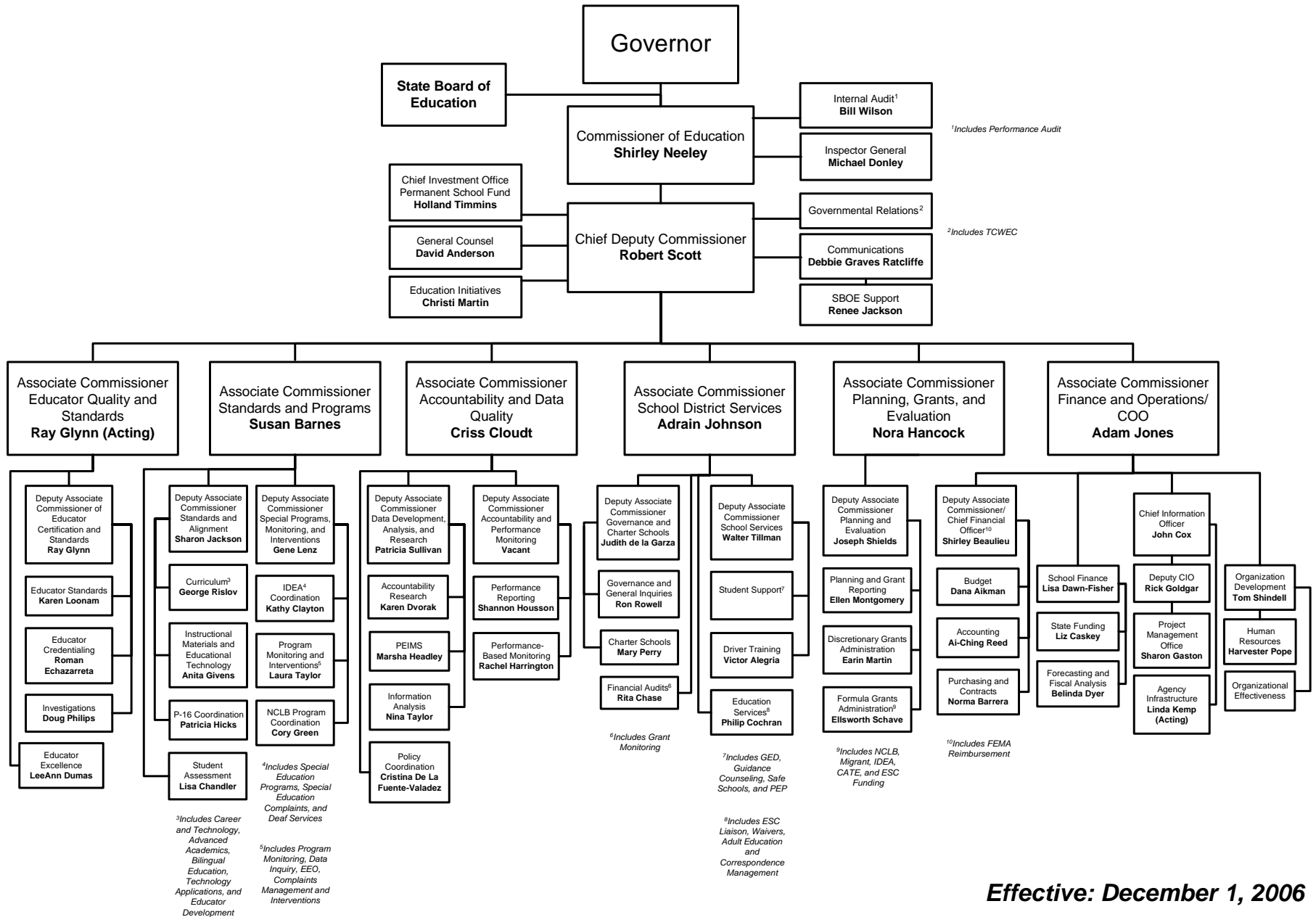


Texas Education Agency, Hierarchy Chart, January 2007

Information: 463-9734

Commissioner of Education, Shirley J. Neeley463-8985	Deputy Associate Commissioner,
Internal Audits, Bill Wilson 463-9846	School Services, Walter Tillman463-8995
Inspector General, Michael Donley 463-5703	Student Support, (vacant)463-8995
	GED463-9292
Chief Deputy Commissioner, Robert Scott463-9451	PEP (Pregnancy Ed Program).....463-9073
General Counsel, David A. Anderson 463-9720	Guidance and Counseling463-9073
Hearings and Appeals.....463-9727	Safe Schools463-9982
Chief Investment Officer, Holland Timmins 463-9169	Driver Training, Victor Alegria936-6777
Governmental Relations, Jenna Watts (acting).....463-9682	
Interagency Coordination463-9283	Deputy Associate Commissioner,
Communications, Debbie Graves Ratcliffe.....463-9000	Governance and Charter Schools, Judith de la Garza463-8998
SBOE Support, Renee Jackson.....463-9007	Governance and General Inquiries, Ron Rowell.....475-3697
Education Initiatives, Lizzette Reynolds..... 936-6060	General Inquiries463-9290
	Charter Schools, Mary Perry463-9575
Associate Commissioner, Standards and Programs, Susan Barnes463-9087	Associate Commissioner, Planning, Grants, and Evaluation, Nora Hancock463-8992
Student Assessment, (vacant) 463-9536	
Deputy Associate Commissioner,	Deputy Associate Commissioner,
Standards and Alignment, Sharon Jackson 463-9483	Planning and Evaluation, Joseph Shields.....463-8992
Curriculum, George Rislov463-9581	Planning and Grant Reporting, Ellen Montgomery463-7004
Career and Technical Education 463-9581	Discretionary Grants, Earin Martin463-9269
Advanced Academics463-9581	Formula Grants, Ellsworth Schave.....463-8525
Bilingual Education.....475-3555	
Instructional Materials and Ed Technology, Anita Givens 463-9601	Associate Commissioner, Finance and Operations, Adam Jones463-9437
P-16 Coordination, Patricia Hicks 936-1616	School Finance, Lisa Dawn-Fisher.....463-9238
Deputy Associate Commissioner, Special Programs,	State Funding, Liz Caskey463-9238
Monitoring, and Interventions, Gene Lenz 463-9414	Forecasting and Analysis, Belinda Dyer463-9238
IDEA Coordination, Kathy Clayton463-9414	Organization Development, Tom Shindell463-9146
Prog Monitoring and Interventions, Laura Taylor493-9414	Human Resources, Harvester Pope463-8200
NCLB Program Coordination, Cory Green 463-9374	Organizational Effectiveness.....463-9146
Associate Commissioner, Accountability and Data Quality, Criss Cloudt463-9701	Chief Information Officer (CIO), John Cox463-8110
Policy Coordination, Cristina De La Fuente-Valadez 475-1497	Deputy CIO, Rick Goldgar463-8110
Deputy Associate Commissioner, Data Development,	Project Management, Sharon Gaston.....463-8110
Analysis and Research, Patricia Sullivan 475-3653	Agency Infrastructure, Linda Kemp (acting)463-9045
Accountability Research, Karen Dvorak475-3523	Library.....463-9050
Information Analysis, Nina Taylor475-3523	Publications Distribution463-9744
PEIMS, Marsha Headley463-9229	
Deputy Associate Commissioner, Accountability and Performance Monitoring, (vacant) 463-9701	Deputy Associate Commissioner/Chief Financial Officer,
Performance Reporting, Shannon Housson463-9704	Shirley Beaulieu463-9189
Performance-Based Monitoring, Rachel Harrington 936-6426	Budget, Dana Aikman463-9189
Associate Commissioner, School District Services, Adrain Johnson463-5899	Accounting, Ai-Ching Reed463-9189
Education Services, Phillip Cochran.....463-9371	Purchasing and Contracts, Norma Barrera463-9189
Waivers.....463-9630	Associate Commissioner, Educator Quality and Standards, Raymond Glynn (Acting)475-3408
ESC Liaison.....463-9371	Educator Excellence, Lee Ann Dumas.....475-3408
Financial Audits, Rita Chase463-9095	Deputy Associate Commissioner,
	Educator Certification and Standards, Raymond Glynn936-8304
	Educator Credentialing, Roman Echazarreta.....936-8400
	Educator Standards, Karen Loonam.....936-8400
	Investigations, Doug Phillips936-8400

Texas Education Agency, Organization Chart, December 2006



Texas School Directory, 2006-07

Effective: December 1, 2006